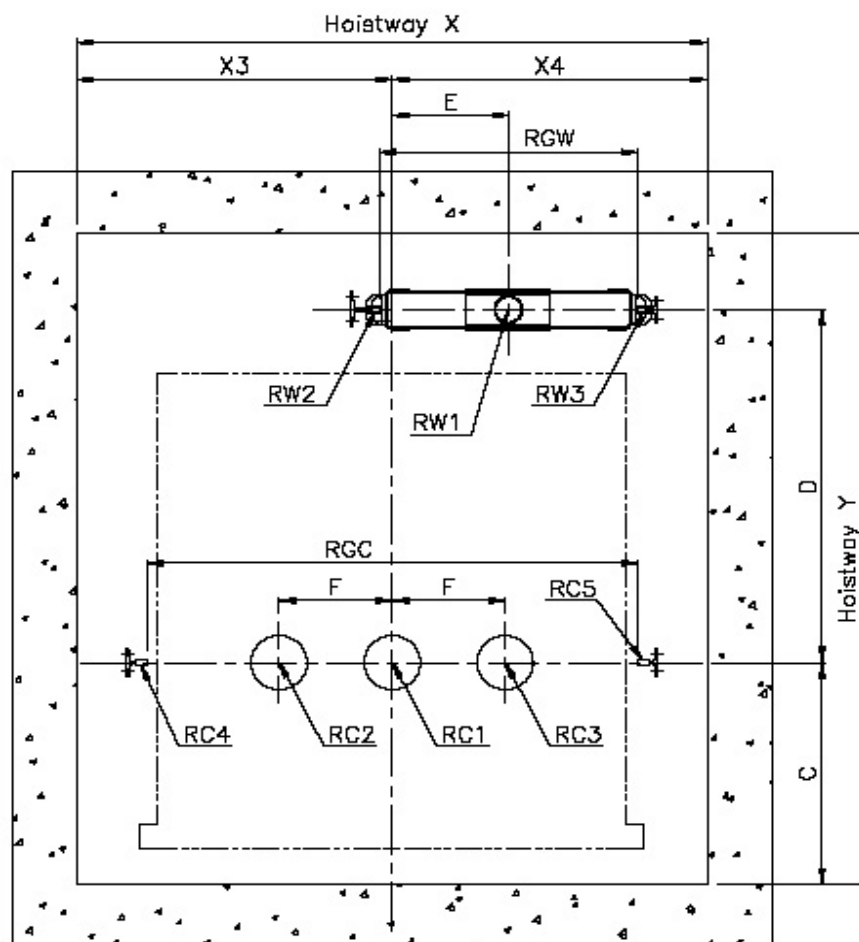


**Pit Reaction Loadings and Locations for UAG Model
Based on Malaysia Regulations**

Hoistway Plan



**Pit Reaction Loadings and Locations for UAG Model
Based on Malaysia Regulations**

No.	Load (kg)	Persons	Speed (m/min)	Location								Pit reaction loadings (kN)								
				X3	X4	C	D	E	F	RGC	RGW	Car side					Counter-weight side			
												RC1	RC2	RC3	RC4	RC5	RW1	RW2	RW3	
1	450	6	60	1070	930	605	760	360	100	1520	800	62.0	31.0	31.0	24.0	26.0	53.0	44.0	20.0	
2	550	8	60	1070	930	605	925	360	150	1520	800	67.0	33.5	33.5	24.0	27.0	56.0	47.0	19.0	
3			90									80.0			25.5	28.5	68.0	48.5	20.5	
4			105																	
5	615	9	60	930	1070	605	1045	360	150	1520	800	73.0	36.5	36.5	25.0	29.0	61.0	48.0	20.0	
6			90									87.0			26.5	30.5	73.0	49.5	21.5	
7			105																	
8	700	10	60	930	1070	605	1150	360	150	1520	800	82.0	41.0	41.0	28.0	31.0	68.0	56.0	22.0	
9			90									98.0			29.5	32.5	81.0	57.5	23.5	
10			105																	
11	750	11	60	930	1070	715	1140	360	150	1520	800	85.0	42.5	42.5	28.0	32.0	70.0	58.0	22.0	
12			90									102.0			29.5	33.5	84.0	59.5	23.5	
13			105																	
14	900	13	60	1030	1170	715	1190	360	150	1720	1000	96.0	48.0	48.0	31.0	35.0	78.0	60.0	24.0	
15			90									115.0			32.5	36.5	94.0	61.5	25.5	
16			105																	
17	1025	15	60	1030	1170	815	1240	360	150	1720	1000	102.0	51.0	51.0	32.0	36.0	81.0	62.0	24.0	
18			90									122.0			33.5	37.5	98.0	63.5	25.5	
19			105																	