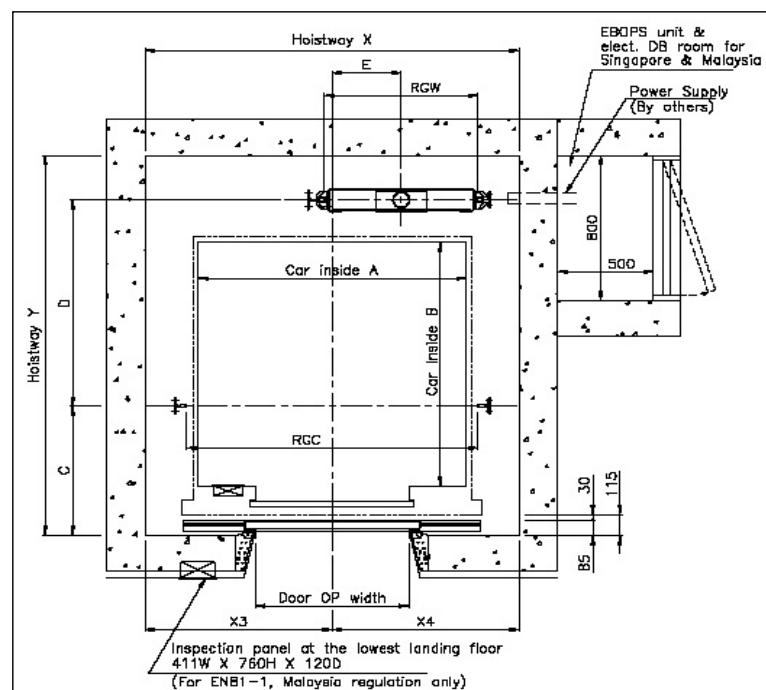
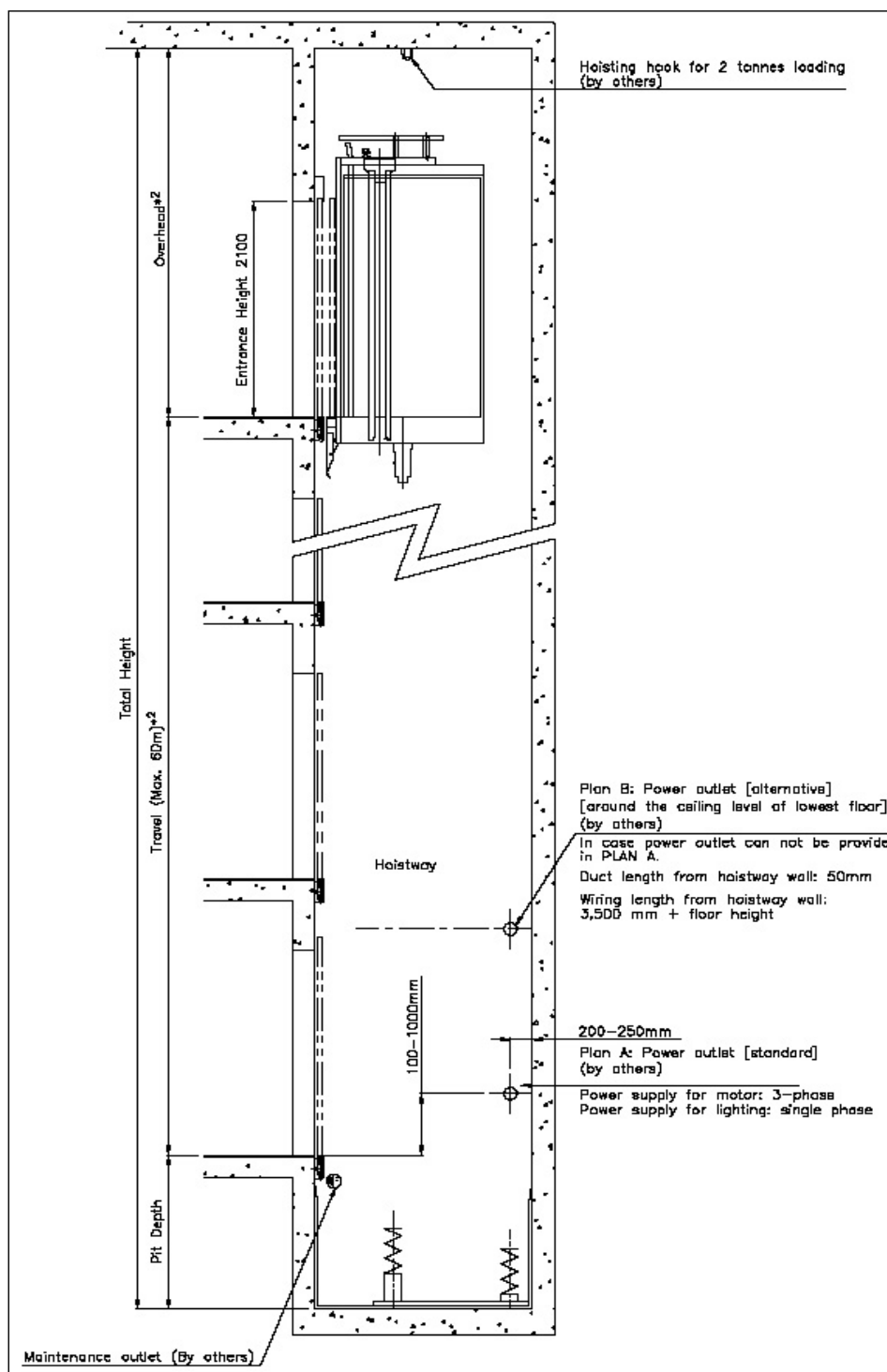


**Dimensions of Hoistway, Overhead and Pit Depth for UAG Model  
Based on Malaysia Regulations**

**Hoistway Plan**



**Hoistway Section**



1. If the pit depth is more than the maximum, please fill back to the maximum depth.
2. If the sum of travel and overhead is less than 11100 mm, please consult HITACHI.
3. If the ceiling design is EX type, minimum overhead shall be increased by 250 mm.
4. Maximum number of stops: 25 stops.
5. Maximum travel: 60 m.
6. Minimum floor-to-floor height: 2500 mm.

**Dimensions of Hoistway, Overhead and Pit Depth for UAG Model  
Based on Malaysia Regulations**

No.	Load (kg)	Persons	Speed (m/min)	Model	Door opening width (mm)	Car internal A x B (mm)	Hoistway X x Y (mm)	Minimum overhead (mm)	Pit depth (mm)		Motor capacity (kW)		
									Minimum	Maximum*1			
1	450	6	60	UAG-450-CO60	800	1400 x 850	2000 x 1570	3900	1650	1650	2.8		
2	550	8	60	UAG-550-CO60	800	1400 x 1030	2000 x 1740	3900	1400	1650	3.4		
3			90	UAG-550-CO90			2000 x 1790	4000				1800	5.1
4			105	UAG-550-CO105			4050	1450				1850	5.9
5	615	9	60	UAG-615-CO60	800	1400 x 1150	2000 x 1860	3900	1400	1650	3.7		
6			90	UAG-615-CO60			2000 x 1910	4000				1800	5.6
7			105	UAG-615-CO60			4050	1450				1850	6.5
8	700	10	60	UAG-700-CO60	800	1400 x 1250	2000 x 1960	3900	1400	1650	4.4		
9			90	UAG-700-CO90			2000 x 2010	4000				1800	6.5
10			105	UAG-700-CO105			4050	1450				1850	7.6
11	750	11	60	UAG-750-CO60	800	1400 x 1350	2000 x 2060	3900	1400	1650	4.6		
12			90	UAG-750-CO90			2000 x 2110	4000				1800	6.9
13			105	UAG-750-CO105			4050	1450				1850	8.1
14	900	13	60	UAG-900-CO60	900	1600 x 1400	2200 x 2110	3900	1400	1650	5.6		
15			90	UAG-900-CO90			2200 x 2160	4000				1800	8.3
16			105	UAG-900-CO105			4050	1450				1850	9.7
17	1025	15	60	UAG-1025-CO60	900	1600 x 1550	2200 x 2260	3900	1400	1650	6.0		
18			90	UAG-1025-CO90			2200 x 2310	4000				1800	9.0
19			105	UAG-1025-CO105			4050	1450				1850	10.5